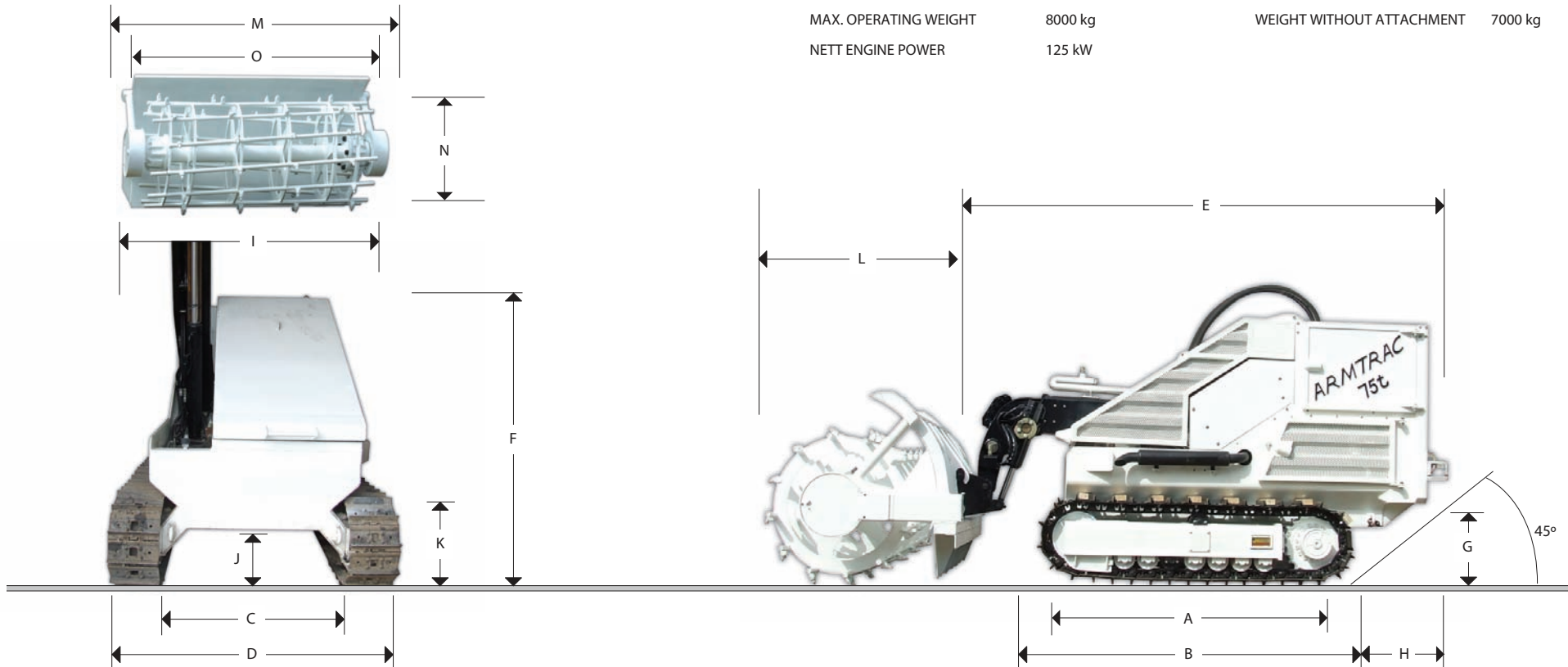


# Armtrac 75T



MAX. OPERATING WEIGHT 8000 kg  
NETT ENGINE POWER 125 kW

WEIGHT WITHOUT ATTACHMENT 7000 kg



## STATIC DIMENSIONS

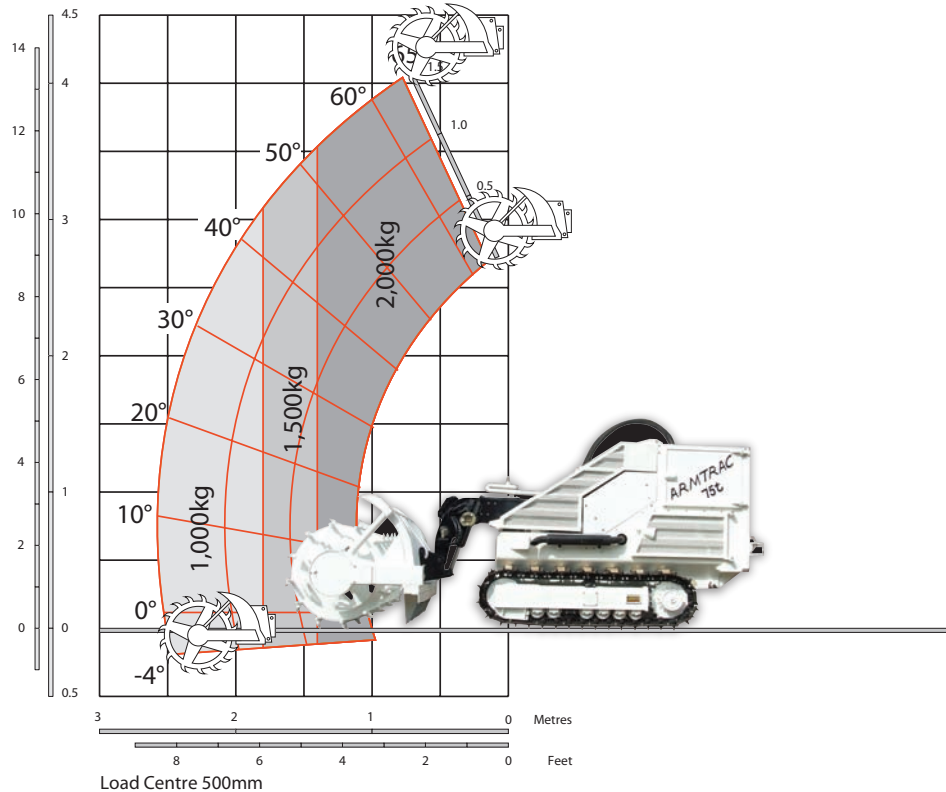
Dimensions in millimetres	Armtrac 75T
A Track length on ground	1800mm
B Under carriage overall length	2370mm
C Track gauge	1490mm
D Width over tracks (500mm trackshoes)	1800mm
<b>Dipper length</b>	
E Transport length-overall length to front of carriage	3700mm
F Transport height	2400mm
G Under carriage height	500mm
H Under carriage to rear chassis	650mm

Dimensions in millimetres	Armtrac 75T
I Width of superstructure	1430mm
J Ground clearance	430mm
K Track height	630mm
L Tiller Length	1500mm
L Flail Length	1500mm
M Tiller and Flail Width	2580mm
N Tiller Height	1230mm
N Flail Height	1230mm
O Tiller and Flail Clearance Path	2200mm

# Armtrac 75T



## LIFT PERFORMANCE – 75T



## LIFT PERFORMANCE – 75T

Machine Model		75T
Lift capacity to full height	kg(lb)	2000 (7936)
Lift capacity at full reach	kg(lb)	1000 (3307)
Lift height	mm(ft-in)	4025 (13-2)
Reach at maximum lift height	mm(ft-in)	815 (2-8)
Maximum forward reach	mm(ft-in)	2515 (8-4)

## ENGINE

Latest technology and advanced design provides low fuel consumption, reduced noise, high torque and power output, total reliability and minimal maintenance.

Two-stage, dry type air filter with primary and safety elements.

Machine Model		75T
Manufacturer		Deutz
Model		BF4M1013FC
Swept Volume	cm <sup>3</sup>	4764cm <sup>3</sup>
No. of cylinders		4
Bore size	mm (in)	108
Stroke	mm (in)	130
Aspiration		Turbo/Intercooler
<b>Power rating</b>		
Power@2000	kW (HP)	125kW
<b>Torque rating</b>		
Torque @ 1400rpm		630Nm
Fuel Consumption		25 - 32 L/H
Water Cooled working temp		55° ambient

## TRACK DRIVE

Type: Fully hydrostatic two speed.

Travel motors: Variable swash axial piston type fully guarded within under carriage frame.

Final drive: Planetary reduction, bolt-on sprockets.

Travel Speed: High 7.0 km/h continuous

Tractive effort: 55kn

## BRAKES

Service brakes: Hydraulically counter balance valve to prevent over speeding on gradients.

Parking brake: Disc type, spring applied, automatic hydraulic release.

## ELECTRICS

24 v negative earth. 145 AH battery. 55 amp alternator. Full road lighting. Reversing light. Horn.

Reverse alarm. Optional remote radio control to a distance of 1km.

## STEERING

One lever 4 position joystick controls (hard wired and remote control) forward / reverse left and right.

Left and right position allows one track to turn in one direction and the other track in the opposite direction allowing the machine to turn in a complete circle on the spot.



# Armtrac 75T



## A GLOBAL COMMITMENT TO QUALITY

Armtrac's total commitment to its products and customers has helped it grow from a one-man business into Britain's largest privately owned manufacturer of de-mining and construction machines.

By making constant and massive investments in the latest production technology, the Armtrac factories have become some of the most advanced in the world.

By leading the field in innovative research and design, extensive testing and stringent quality control, Armtrac machines have become renowned all over the world for performance, value and reliability.

And with a global sales and service network of over 400 distributors, the company exports over 70% of its production to all five continents.

Through setting the standards by which others are judged, Armtrac has become one of Britain's most impressive success stories.

