

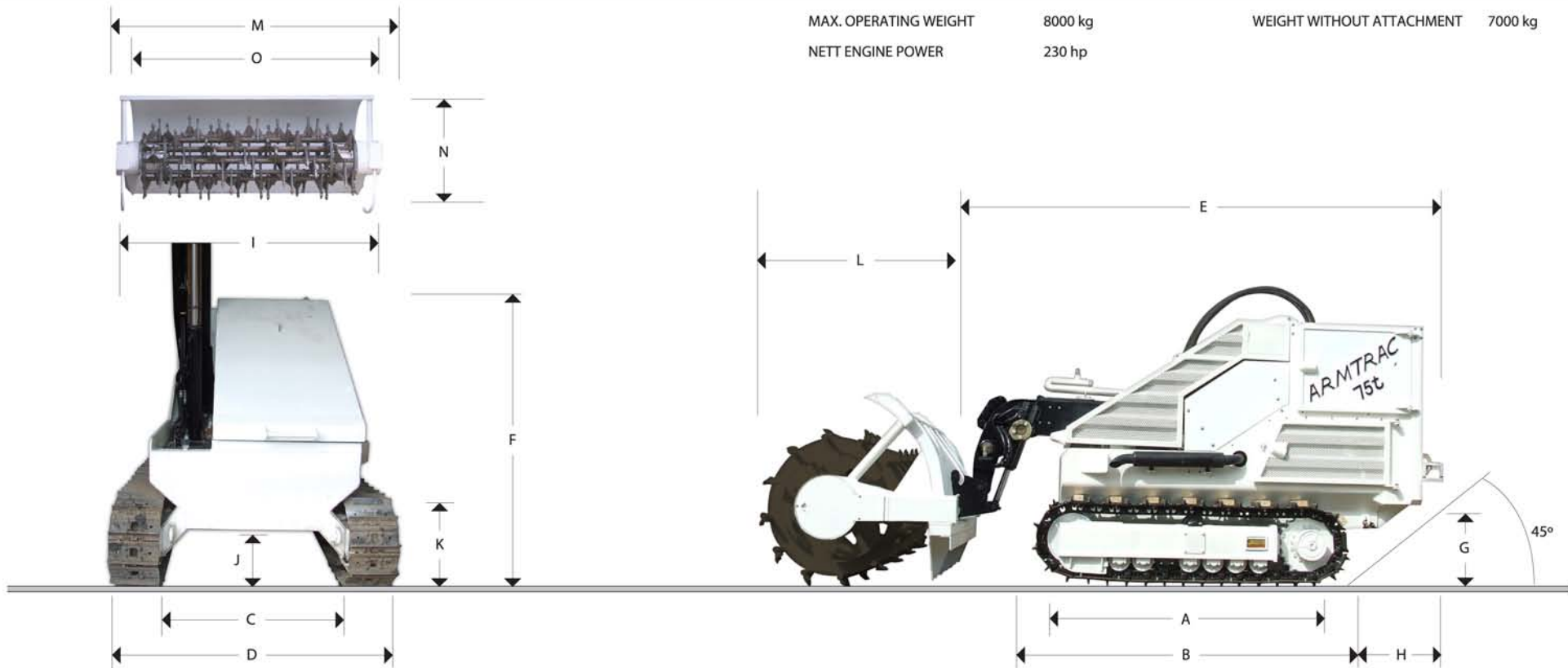
Armtrac 75T



MAX. OPERATING WEIGHT 8000 kg

WEIGHT WITHOUT ATTACHMENT 7000 kg

NETT ENGINE POWER 230 hp



STATIC DIMENSIONS

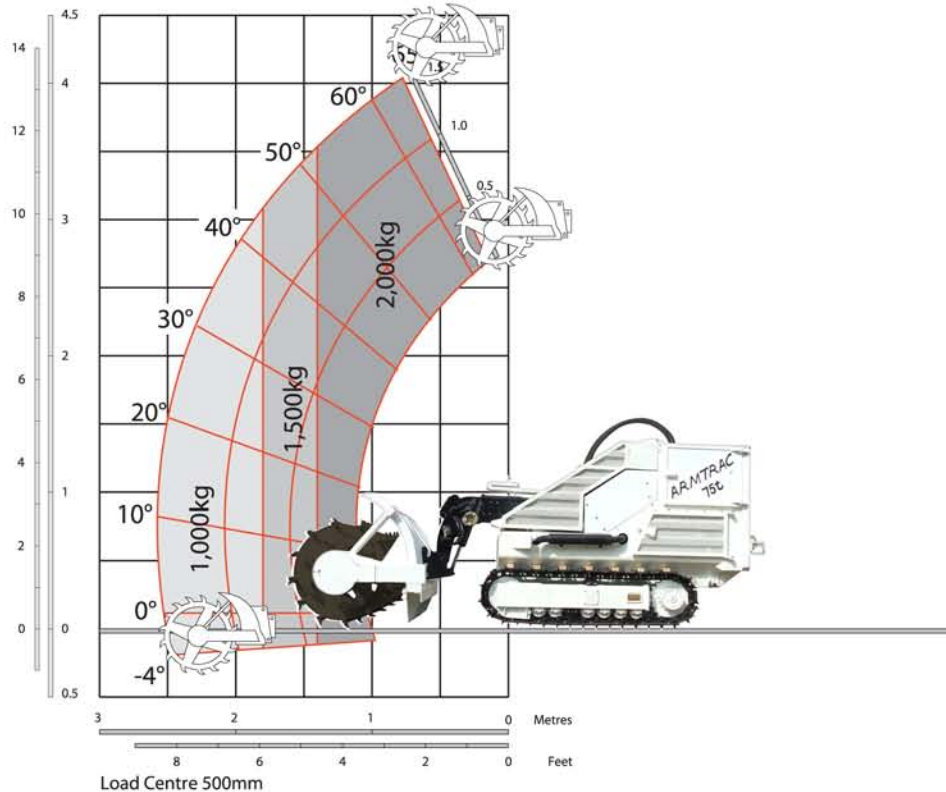
Dimensions in millimetres	Armtrac 75T
A Track length on ground	1800mm
B Under carriage overall length	2370mm
C Track gauge	1490mm
D Width over tracks (500mm trackshoes)	1800mm
Dipper length	
E Transport length-overall length to front of carriage	3700mm
F Transport height	2400mm
G Under carriage height	500mm
H Under carriage to rear chassis	650mm

Dimensions in millimetres	Armtrac 75T
I Width of superstructure	1430mm
J Ground clearance	430mm
K Track height	630mm
L Tiller Length	1500mm
L Flail Length	1500mm
M Tiller and Flail Width	2580mm
N Tiller Height	1230mm
N Flail Height	1230mm
O Tiller and Flail Clearance Path	2200mm

Armtrac 75T



LIFT PERFORMANCE – 75T



LIFT PERFORMANCE – 75T

Machine Model		75T
Lift capacity to full height	kg	2000
Lift capacity at full reach	kg	1000
Lift height	mm	4025
Reach at maximum lift height	mm	815
Maximum forward reach	mm	2515

ENGINE

Latest technology and advanced design provides low fuel consumption, reduced noise, high torque and power output, total reliability and minimal maintenance.

Two-stage, dry type air filter with primary and safety elements.

Machine Model		75T
Manufacturer		Iveco
Model		N67ENT
Maximum Torque	NM	1020
No. of cylinders		6
Maximum Rating	(HP)	238
Maximum	Rpm	2200
Aspiration		Turbo/Intercooler
Power rating		
Power@2000	kW (HP)	230 hp
Torque rating		
Fuel Consumption		25 - 32 L/H
Water Cooled working temp		55° ambient

TRACK DRIVE

Type: Fully hydrostatic two speed.

Travel motors: Variable swash axial piston type fully guarded within under carriage frame.

Final drive: Planetary reduction, bolt-on sprockets.

Travel Speed: High 7.0 km/h continuous

Tractive effort: 55kn

BRAKES

Service brakes: Hydraulically counter balance valve to prevent over speeding on gradients.

Parking brake: Disc type, spring applied, automatic hydraulic release.

ELECTRICS

24 v negative earth. 145 AH battery. 55 amp alternator. Full road lighting. Reversing light. Horn.

Reverse alarm. Optional remote radio control to a distance of 1km.

STEERING

One lever 4 position joystick controls (hard wired and remote control) forward / reverse left and right.

Left and right position allows one track to turn in one direction and the other track in the opposite direction allowing the machine to turn in a complete circle on the spot.

Armtrac 75T



A GLOBAL COMMITMENT TO QUALITY

Armtrac's total commitment to its products and customers has helped it grow from a one-man business into Britain's largest privately owned manufacturer of de-mining and construction machines.

By making constant and massive investments in the latest production technology, the Armtrac factory has become one of the most advanced in the demining world.

By leading the field in innovative research and design, extensive testing and stringent quality control, Armtrac machines are becoming renowned all over the world for performance, value and reliability.

With global sales and service network of over 40 distributors, the company exports over 70% of its production to all five continents.

Through setting the standards by which others are judged, Armtrac has become one of Britain's most impressive success stories.

